

Nomadic Hub of Art Education in the Arctic

Open workshops and seminar in Karasjok 8th–12th April 2024



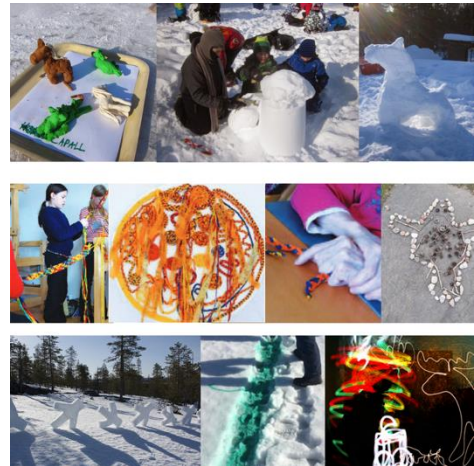
This unique event, organized in collaboration with the Sami Contemporary Art Center and AEA-project's universities, offers open art workshops and a seminar.



Calling All Enthusiastic Groups! We are on the lookout for groups keen on participating in **free art workshops on April 10th and 11th (Wednesday and Thursday)**, welcoming school pupils, students, and other local groups. *What to Expect:*

- Engaging workshops led by university students in partnership with artists and university teachers from Sweden, Norway, Finland, and Greenland.
- Languages: mix of English, Scandinavian and Finnish.
- Explore Karasjok's places, traditions, and culture through hands-on activities, using materials from the environment, traditional handicrafts, photography, and video to give voice and space through contemporary art practices.
- Locations: Sami center for contemporary art, outdoors, or even your own classroom

We value your perspectives, experiences, ideas, and wishes for workshop topics.



About the Nomadic Hub: This initiative is part of the educational development project "New Genre Arctic Art Education" coordinated by the University of Lapland, along with partner universities Nord University Norway, Umeå University Sweden, and Greenland University. Together, we share a strong interest in Arctic and Indigenous arts, design, and craft education.

These workshops are part of art and craft teacher students' course to learn about Northern and Sami arts and crafts, fostering international collaboration. The project collaborates with partners from the University of Arctic's thematic network Arctic Sustainable Art, Design, and Visual Culture Education (ASAD), as well as expertise from cross-sector organizations.

If you are interested in participating with your group, please contact us for more details before 15th Feb:

Annamari Manninen, Art education lecturer and AEA- project coordinator, university of Lapland, annamari.manninen@ulapland.fi, tel. +358 40 4844 368

Marija Griniuk, Sámi Dáiddaguovddás, marija@samidaiddaguovddas.no, tel. +47 902 48 572

